

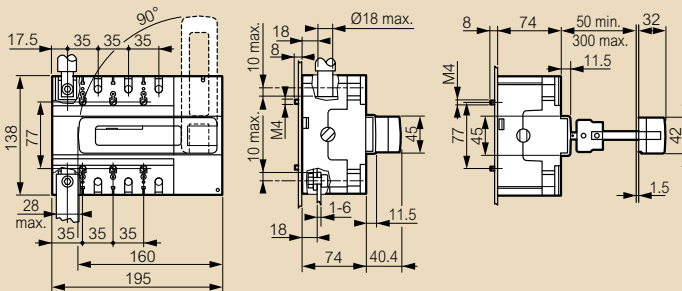
DPX™-IS 250 isolating switches

Electrical characteristics

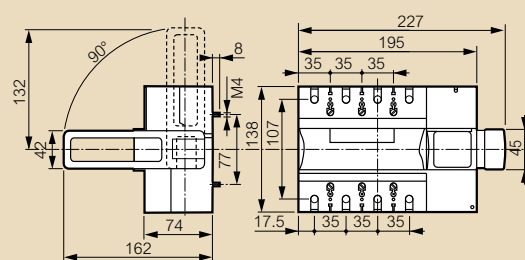
Rating		160 A	250 A
Connection	Cu flexible	150 mm ²	
	Cu rigid / Alu	185 mm ²	
Copper bar	Width max. 28 mm		
Nominal rating (Ue)	690 V _~ - 250 V _≐		
Rated insulation voltage (Ui)	800 V _~		
Rated impulse withstand voltage (Uimp)	8 kV _~		
AC 23 A	400 V _~	160 A	250 A
	690 V _~	160 A	160 A
AC 22 A	690 V _~	160 A	250 A
Short-circuit making capacity (kA efficient) (Icm)	40 kA		
I admissible Is (Icw)	12 kA efficient		
I admissible with fuse (Icc)	100 kA efficient		
Max. rating of fuse	gG	160 A	250 A
	aM	160 A	160 A
Rated closing capacity on short circuit (kA peak) (Icm)	40 kA		
Endurance	mechanical	25000 operations	
	electrical (AC 23 - 400 V _~)	2500 operations	
Index of protection	IP 20 front panel		

Dimensions

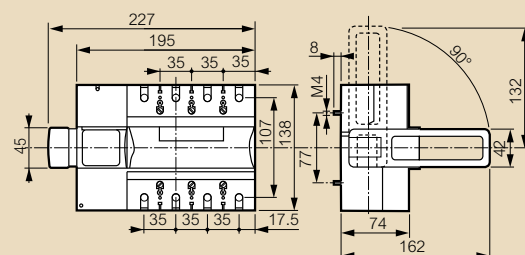
Front handle



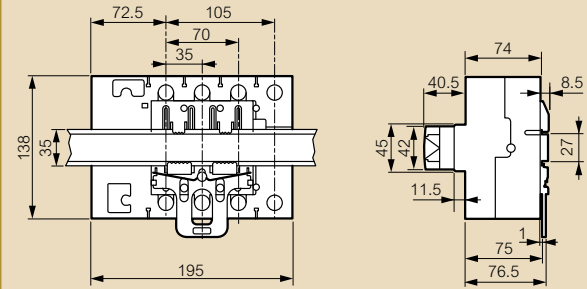
Right lateral handle



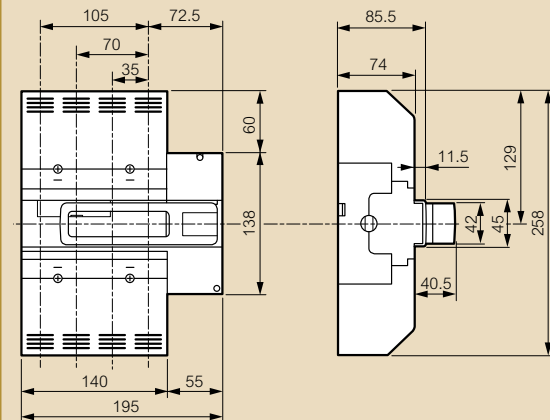
Left lateral handle



Mounted on rail Din



With terminal shields



Mounting

Mounted on rail with plate

