



# Appleton Group Hazardous Area Equipment with Local Assembly and Distribution

AUSTRALIAN WORKSHOP AGENT FOR



**Koenigs is the local assembler and distributor of the Emerson  
Appleton® range of IEC explosion-proof electrical equipment**



Steve Ellis  
National Business Development Mgr  
Koenigs Isolators & Enclosures  
Email: [se@koenigs.com.au](mailto:se@koenigs.com.au)  
Ph: +61 2 4272 5344  
Mob: +61 408 320 858

John McKillop  
Ex Specialist  
Koenigs Isolators & Enclosures  
Email: [jm@koenigs.com.au](mailto:jm@koenigs.com.au)  
Ph: +61 2 4227 25344  
Mob: +61 431 653 060

Gabriele Pasturi  
Area Manager ANZ Appleton Group  
Emerson Automation Solutions  
Email: [gabriele.pasturi@emerson.com](mailto:gabriele.pasturi@emerson.com)  
Ph: +61 3 9721 0200  
Mob: +61 498 071 240

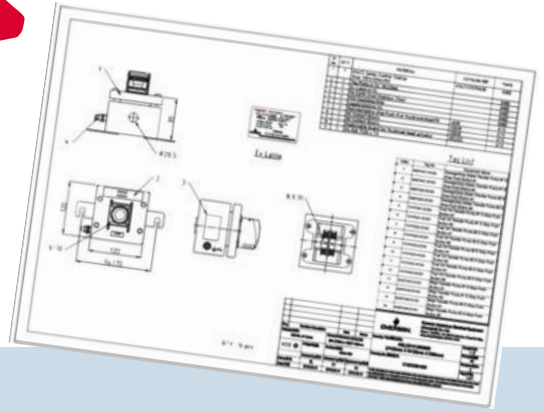


**Koenigs Isolators & Enclosures**  
42-44 Doyle Ave Unanderra NSW 2526 Australia  
Ph: +61 2 4227 25344

# Enclosures Stainless Steel and GRP

Local Control Stations LCS  
Control Panels  
Junction Boxes  
Terminal Enclosures

**Local design and  
assembly at  
Koenigs**



### **ASLCS Series**

Stainless steel 316L LCS and Control Panels

### **AGLCS Series**

Glass reinforced polyester (GRP) LCS and Control Panels

### **ASSE Series**

Stainless steel 316L Junction Boxes / Terminal Enclosures

### **AGE Series**

Glass reinforced polyester (GRP) Junction Boxes / Terminal Enclosures

### **APDAC Ex d Series**

Cast aluminium Junction Boxes and LCS



Koenigs is your local assembler and distributor of the Emerson  
Appleton® range of IEC explosion-proof electrical equipment  
Ph: +61 2 4227 25344



**APPLETON**  
Distributor

# Plugs and Sockets Multipin Connectors

Plugs and Sockets  
Mobile  
Wall mount  
Panel mount  
16A - 63A

  
**Stocked locally  
at Koenigs**



## **PRE and PRD Plug and Socket Series Ex d Ex e and Ex tD**

Wall mount, mobile sets and flush mount type

### **Zone 1, 2, 21 and 22: 2 - 5 pin**

16A, 32A, 63A & (125A ATEX only), Extra Low Voltage (20V - 50V),  
Low Voltage (100V - 690V)

## **UPR Plug and Socket Series Ex db eb IIC**

Wall mount with isolating switch

### **Zone 1, 2, 21 and 22: 2 - 5 pin**

16A and 32A  
Low Voltage (100V - 690V)

## **M-Line MEP series**

Multipin connectors 1 - 72 pin



Koenigs is your local assembler and distributor of the Emerson  
Appleton® range of IEC explosion-proof electrical equipment  
Ph: +61 2 4227 25344



**APPLETON™**  
Distributor

# Hazardous Area and Industrial Lighting

LED and Traditional Source  
Linear - Standard and  
Emergency  
Flood  
High bay  
Task



## **Mercmaster™ LED Low Profile**

Ultimate flexibility in low mounting heights to meet customers visibility needs with field changeable globes and accessories.

## **Mercmaster™ Generation 3 LED**

A task light designed to provide higher lumen outputs, ambient temperatures with additional light distribution and voltage options. Retrofit-able to installed Mercmaster™ HID fixtures. Drives energy and maintenance savings.

## **CLED™**

The CLED™ series is a robust & versatile fixture, Ex d Zone 1 Task & Area Lighting. Suitable for Walkways, Conveyers, Distillation Towers, Open Areas, Platforms, Loading Areas, Tunnels, Stairwells and other areas where Zone 1 rated luminaire is required.

## **Areamaster™ LED**

Reliable and rugged floodlight or high bay fixture that is virtually maintenance free, the Areamaster™ will give your workers bright and consistent light to be safe and productive on the job.

## **FELED/FNLED and Linmaster™ LED**

Linear non-metallic fluorescent replacement with best-in-class corrosion resistance, durability and performance. Uses the same footprint and mounting hardware, a wide range of lumen outputs. Low profile design and functional simplicity for many applications and mounting height.



Koenigs is your local assembler and distributor of the Emerson  
Appleton® range of IEC explosion-proof electrical equipment  
Ph: +61 2 4227 25344



**APPLETON™**  
Distributor